

HFN push trolley



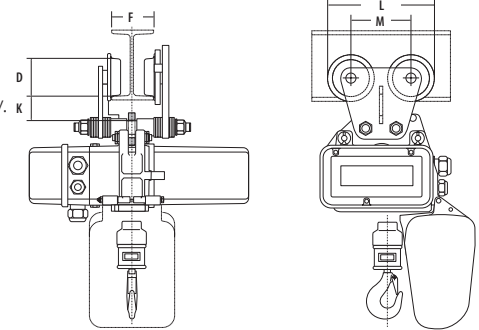
REMA HFN trolleys can only be assembled together with the REMA SR electric chain hoists.

Properties

- Double axle design.
- Anti-drop and tilting protection provides extra safety.
- Equipped with steel machined wheels.
- Assembly and suspension plates not included.

Norm:

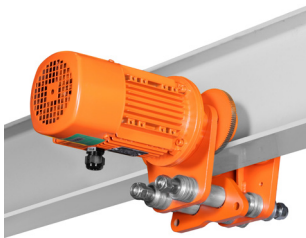
- EN12100-1/2, EN13157



Allways mention the right flange width in mm.

Type	WLL (kg)	D (mm)	F (mm)	K (mm)	L (mm)	M (mm)	Weight (kg)	ProductId
HFN500	500	70	50-300	33	200	112	8	0814001
HFN2000	2000	70	66-300	35	200	112	10	0814003
HFN3200	3200	103	82-300	35	288.5	152.5	22	0814005
HFN6300	6300	122	90-310	36	351	191	47	0814007

EFS electric trolley



REMA EFS trolley can only be delivered in combination with REMA SR 400/24V electric chain hoist.

Properties

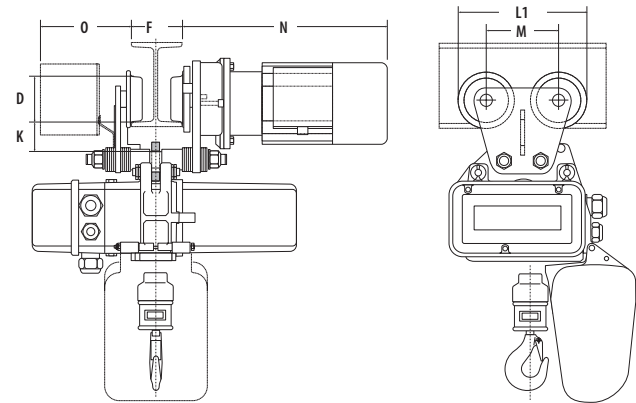
- 400 V, 3 phase, 50 Hz Double-pin design.
- Double axle design.
- 1 or 2 travel speeds.
- Anti-drop and tilting protection provides extra safety.
- 24 V control and pendant control not included.
- Assembly and suspension plates not included.

Tecnical properties

- Operation voltage 400V
- Protection class IP54
- Isolation class F

Norm:

- EN12100-1/2, EN13157, EN14492.2



Allways mention the right flange width in mm.

Type	WLL (kg)	Speed (m/min)	D (mm)	F (mm)	K (mm)	L1 (mm)	M (mm)	N (mm)	O (mm)	Min. radius (mm)	Motor (kW)	Weight (kg)	ProductId
EFS500-16	500	16	70	50-300	33	216	112	220	142	1000	0.12	17	0817001
EFS2000-16	2000	16	70	66-300	38	216	112	220	146	1500	0.12	17	0817005
EFS500-5/20	500	5/20	70	50-300	33	216	112	292	280	1000	0.04/0.18	19	0818001
EFS2000-5/20	2000	5/20	70	66-300	35	216	112	292	280	1500	0.04/0.18	18	0818005
EFS3200	3200	5/20	103	82-300	38	293.5	152.5	385	280	1500	0.04/0.18	34	0818007
EFS6300	6300	4/16	122	90-310	38	293.5	152.5	409	280	2000	0.06/0.25	63	0818009
EFS12500	12500	4/16	150	140-310	38	351	191	409	280	2500	0.12/0.55	150	0818011